

# Water Resources Engineer

Variety of Levels



we  water  
Do you?

Calibre is looking for a passionate Water Resources Engineer to add to our Water Resources Division. We're looking for exceptional candidates at a variety of levels. Our ideal candidate will be a great culture fit or culture add with a talent for solving problems and puzzles; an innovative mind for water resources engineering; and a passion for connecting people with water.

In this position, you'll be design and engineer water resources projects for local public agencies, the federal government, the Mile High Flood District, and private developments. This position requires previous experience with designing or engineering for: stormwater projects, drainage, stormwater master planning, H&H modeling, water transmission and distribution, water storage, and utility infrastructure.

## You'll thrive in this position if you're passionate about:

- ✓ Taking care of waterways.
- ✓ Supporting US Forests, National Parks, and public openspaces.
- ✓ Working with Mile High Flood District and local public agencies.
- ✓ Planning for the future.
- ✓ Conscientiously densifying urban areas.
- ✓ Responding to stormwater emergencies.
- ✓ Growing, learning, and leading.
- ✓ Loving where you work.

## Required Skills

- ✓ At least 5 years of experience in water resources
- ✓ Fully proficient in AutoCAD Civil 3D
- ✓ Fully proficient in hydraulic and hydrologic modeling

## Calibre Perks

- ✓ Generous Salaries & PTO
- ✓ 100% Employer-Paid Health Insurance
- ✓ Diverse Project Workload
- ✓ Monthly Team-Building Events
- ✓ Birthdays your Way
- ✓ Snacks, Drinks & Weekly Catered Lunches
- ✓ 401K Contributions
- ✓ Tuition Reimbursement
- ✓ Flexible and Remote Work
- ✓ Transit Reimbursement
- ✓ Calibre Swag Store
- ✓ Health & Wellness Program
- ✓ Licensure Reimbursement
- ✓ Mentor Protégé Program
- ✓ Active Living Stipend
- ✓ Paid Weekly Training
- ✓ Paid Time Off to Vote
- ✓ Short-Term and Long-Term Disability
- ✓ Company-Paid FMLI Coverage

**We work half-day Fridays!**

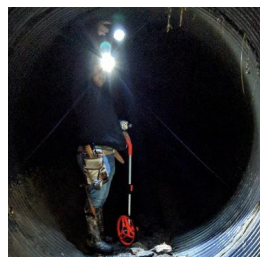
## Estimated Pay Scale

**\$60,000 - \$90,000**

dependent on experience

## Ready to dive in?

Simply submit your resume and cover letter to [info@calibre-engineering.com](mailto:info@calibre-engineering.com).



Courtesy City of Englewood

Courtesy Stream Landscape and Design

Courtesy Stream Landscape and Design