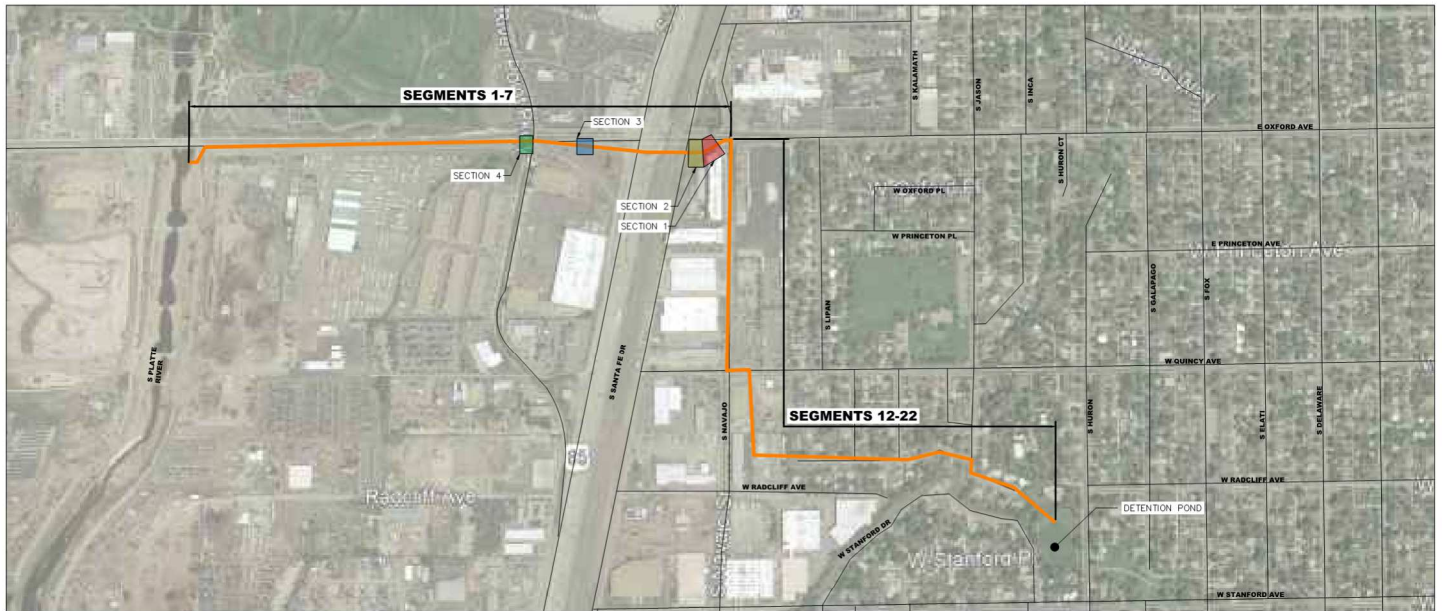


Appendix A

Figure 1 – Storm Sewer Alignment and Segments



- SECTION 1: 72 LF OF 78" RCP
- SECTION 2: 76 LF OF 78" RCP
- SECTION 3: 56 LF OF 78" RCP
- SECTION 4: 56 LF OF 92" RCP

FIGURE 1: STORM SEWER ALIGNMENT AND SEGMENTS
SCALE: N.T.S.

PATH: F:\ENGINEERING\OSP\CAD\DWG\REVISIONS\FIGURE1.DWG
 PLOTTED BY: JESSICA.ALEN - PLOT DATE: 12/28/2018 11:17 AM

DATE	REVISION DESCRIPTION

Project Name: Figure1.dwg			
Site Number: ENGLEWOOD OSP			
Prepared For: CITY OF ENGLEWOOD	Designed: MM	Drawn: JNA	Checked: MM

Calibre
 Calibre Engineering, Inc.
 9090 South Ridgeline Boulevard, Suite 105
 Highlands Ranch, CO 80128 (303) 739-0434
 www.calibre-engineering.com
 Construction Management | CM Engineering | Surveying

CITY OF ENGLEWOOD OSP
SITE EXHIBIT
STORM ALIGNMENT AND SECTIONS

Sheet
F1
 of
 1
 Date
 28 December 2018



Appendix B

Field Notes and Photographs

City of Englewood, Colorado
 South Englewood Storm Sewer Condition Assessment
 Field Data Sheets - Line 1 and Line 2

Date: 11-Nov-18
 Inspector: Middleton / Moore
 Weather: _____

Segment	Diameter (in)	Sta	Sta	Length (ft)	Notes
LINE 1 to Navajo Street					
1	92	100+58	101+30 MH R-1	72	
2	92	101+30 MH R-1	106+00 MH R-2	470	
3	92	106+00 MH R-2	111+75 MH R-3	575	
4	92	111+75 MH R-3	118+00 MH R-4	625	
5	92	118+00 MH R-4	119+75 Increaser	175	
6	78	119+75 Increaser	122+20 Begin Realignment	245	
7	78	122+20 Begin Realignment	140+28 MH R-6	1808	
LINE 2 Oxford to Rotolo Park					
12	84	200+04 MH R-6 Junction Box	204+25 MH R-201	421	
13	84	204+25 MH R-201	208+78 MH R-202	453	
14	84	208+78 MH R-202	212+88 Begin Jacked Pipe	410	
15	66	212+88 Begin Jacked Pipe	213+12 End Jacked Pipe	24	
16	84	213+12 End Jacked Pipe	214+58 MH R-203	146	
17	84	214+58 MH R-203	219+70 MH R-204	512	
18	76	219+70 Reducer	224+00 MH R-204	430	
19	76	224+00 MH R-204	227+90 MH R-206	390	
20	60	227+90 MH R-206	233+00 MH R-207	510	
21	60	233+00 MH R-207	237+05 Transition	405	DID NOT INSPECT - VIDEO FROM 4330 JASON TO ROTOLO
22	72 x 44	237+05 Transition	237+98	93	Rotolo Park

**Storm Drain Condition Assessment
Field Data Log**

**Segment 1
Line 1**

Client: City of Englewood, Colorado
 Project: South Englewood Storm Drain Condition Assessment
 Date: 11/11/2018

Material: CMP
 Diameter: 92 in.
 Station: 100+60
 Length: 70 ft. Station: 101+30

Corrosion			
Location	Approx. Sta	Rating 1 - 3	Notes
Invert to Springline			No corrosion noted - CMP in excellent condition
Springline to Crown			No corrosion noted - CMP in excellent condition
Crown			No corrosion noted - CMP in excellent condition

Corrosion Rating Scale	
1	Major corrosion
2	Medium corrosion
3	Minor corrosion

Deformation			
Location	Approx. Sta	Rating 1 - 3	Notes
Invert to Springline			No deformation noted
Springline to Crown			No deformation noted

Deformation Rating Scale	
1	Major deformation
2	Medium deformation
3	Minor deformation

Invert Deterioration			
Location	Approx. Sta	Rating 1 - 3	Notes
Invert	101+00	3	Coating damaged for approximately 20 feet

Invert Rating Scale	
1	Major deterioration
2	Medium deterioration
3	Minor deterioration

Joints and Seams			
Location	Approx. Sta	Rating 1 - 4	Notes
Joints and Seams	101+00	1	Slight separation; bedding exposed

Joints and Seams Rating Scale	
1	Separated (open) joint
2	Misaligned joint
3	Faulted joint
4	Partially opened

**Storm Drain Condition Assessment
Field Data Log**

**Segment 2
Line 1**

Client: City of Englewood, Colorado
 Project: South Englewood Storm Drain Condition Assessment
 Date: 11/11/2018

Material: CMP
 Diameter: 92 in.
 Station: 101+30
 Length: 470 ft. Station: 106+00

Corrosion			
Location	Approx. Sta	Rating 1 - 3	Notes
Invert to Springline	Sta 103+65		No corrosion noted - Invert covered with sedimentation (Approx 10" deep)
Springline to Crown			No corrosion noted - CMP in excellent condition
Crown			No corrosion noted - CMP in excellent condition



Corrosion Rating Scale	
1	Major corrosion
2	Medium corrosion
3	Minor corrosion

Deformation			
Location	Approx. Sta	Rating 1 - 3	Notes
Invert to Springline			No deformation noted
Springline to Crown			No deformation noted

Deformation Rating Scale	
1	Major deformation
2	Medium deformation
3	Minor deformation

Invert Deterioration			
Location	Approx. Sta	Rating 1 - 3	Notes
Invert	Sta 103+65		No deterioration noted - sedimentation average 10"

Invert Rating Scale	
1	Major deterioration
2	Medium deterioration
3	Minor deterioration

Joints and Seams			
Location	Approx. Sta	Rating 1 - 4	Notes
Joints and Seams	101+58	4	Sta 101+58 - slight separation

Joints and Seams Rating Scale	
1	Separated (open) joint
2	Misaligned joint
3	Faulted joint
4	Partially opened

**Storm Drain Condition Assessment
Field Data Log**

**Segment 3
Line 1**

Client: City of Englewood, Colorado
 Project: South Englewood Storm Drain Condition Assessment
 Date: 11/11/2018

Material: CMP
 Diameter: 92 in.
 Station: 106+00
 Length: 575 ft. Station: 111+75

Corrosion			
Location	Approx. Sta	Rating 1 - 3	Notes
Invert to Springline			No corrosion noted
Springline to Crown			No corrosion noted
Crown			No corrosion noted

Corrosion Rating Scale	
1	Major corrosion
2	Medium corrosion
3	Minor corrosion

Deformation			
Location	Approx. Sta	Rating 1 - 3	Notes
Invert to Springline			No deformation noted
Springline to Crown			No deformation noted

Deformation Rating Scale	
1	Major deformation
2	Medium deformation
3	Minor deformation

Invert Deterioration			
Location	Approx. Sta	Rating 1 - 3	Notes
Invert			No deterioration noted; Sta 108+90 Sed 17"; Sta 109+57 Sed 21"; Sta 110+25 Sed 22"; Sta 111+13 Sed 31"; Sta 111+75 Sed 32"

Invert Rating Scale	
1	Major deterioration
2	Medium deterioration
3	Minor deterioration

Joints and Seams			
Location	Approx. Sta	Rating 1 - 4	Notes
Joints and Seams			No separation noted

Joints and Seams Rating Scale	
1	Separated (open) joint
2	Misaligned joint
3	Faulted joint
4	Partially opened



**Storm Drain Condition Assessment
Field Data Log**

**Segment 4
Line 1**

Client: City of Englewood, Colorado
 Project: South Englewood Storm Drain Condition Assessment
 Date: 11/11/2018

Material: CMP
 Diameter: 92 in.
 Station: 111+75 Station: 118+00
 Length: 625 ft.

Corrosion			
Location	Approx. Sta	Rating 1 - 3	Notes
Invert to Springline			No corrosion noted
Springline to Crown			No corrosion noted
Crown			No corrosion noted

Corrosion Rating Scale	
1	Major corrosion
2	Medium corrosion
3	Minor corrosion

Deformation			
Location	Approx. Sta	Rating 1 - 3	Notes
Invert to Springline			No deformation noted
Springline to Crown			No deformation noted

Deformation Rating Scale	
1	Major deformation
2	Medium deformation
3	Minor deformation

Invert Deterioration			
Location	Approx. Sta	Rating 1 - 3	Notes
Invert	Sta 117+32 to Sta 118+00	1	Severe invert deterioration Sta 111+75 Sed 32"; Sta 112+21 Sed 31"; Sta 112+98 Sed 23"; Sta 114+10 Asphalt, Sed 14"; Sta 116+33 Asphalt; Sta 117+32 End asphalt deposit, Sta 118+00 Invert deterioration severe

Invert Rating Scale	
1	Major deterioration
2	Medium deterioration
3	Minor deterioration

Joints and Seams			
Location	Approx. Sta	Rating 1 - 4	Notes
Joints and Seams			No separation noted

Joints and Seams Rating Scale	
1	Separated (open) joint
2	Misaligned joint
3	Faulted joint
4	Partially opened



**Storm Drain Condition Assessment
Field Data Log**

**Segment 5
Line 1**

Client: City of Englewood, Colorado
 Project: South Englewood Storm Drain Condition Assessment
 Date: 11/11/2018

Material: CMP
 Diameter: 92 in.
 Station: 118+00
 Length: 175 ft. Station: 119+75

Corrosion			
Location	Approx. Sta	Rating 1 - 3	Notes
Invert to Springline	118+63 to 119+37	1	Severe invert corrosion
Springline to Crown			No corrosion noted
Crown			No corrosion noted



Corrosion Rating Scale	
1	Major corrosion
2	Medium corrosion
3	Minor corrosion

Deformation					
Location	Approx. Sta	Rating 1 - 3	Notes		
Invert to Springline					
Springline to Crown					

Deformation Rating Scale	
1	Major deformation
2	Medium deformation
3	Minor deformation

Invert Deterioration			
Location	Approx. Sta	Rating 1 - 3	Notes
Invert	118+63 to 119+37	1	Severe invert corrosion; bedding exposed

Invert Rating Scale	
1	Major deterioration
2	Medium deterioration
3	Minor deterioration

Joints and Seams			
Location	Approx. Sta	Rating 1 - 4	Notes
Joints and Seams			No separation noted

Joints and Seams Rating Scale	
1	Separated (open) joint
2	Misaligned joint
3	Faulted joint
4	Partially opened

**Storm Drain Condition Assessment
Field Data Log**

**Segment 6
Line 1**

Client: City of Englewood, Colorado
 Project: South Englewood Storm Drain Condition Assessment
 Date: 11/11/2018

Material: CMP / RCP
 Diameter: 78 in.
 Station: 119+75 Station: 122+20
 Length: 245 ft.

Corrosion			
Location	Approx. Sta	Rating 1 - 3	Notes
Invert to Springline	119+75		No corrosion noted Transition missing grout
Springline to Crown			No corrosion noted
Crown			No corrosion noted

Corrosion Rating Scale	
1	Major corrosion
2	Medium corrosion
3	Minor corrosion

Deformation			
Location	Approx. Sta	Rating 1 - 3	Notes
Invert to Springline			No deformation noted
Springline to Crown			No deformation noted

Deformation Rating Scale	
1	Major deformation
2	Medium deformation
3	Minor deformation

Invert Deterioration			
Location	Approx. Sta	Rating 1 - 3	Notes
Invert			Heavy invert corrosion noted, isolates areas of debris in CMP sections

Invert Rating Scale	
1	Major deterioration
2	Medium deterioration
3	Minor deterioration

Joints and Seams			
Location	Approx. Sta	Rating 1 - 4	Notes
Joints and Seams			No separation noted

Joints and Seams Rating Scale	
1	Separated (open) joint
2	Misaligned joint
3	Faulted joint
4	Partially opened



**Storm Drain Condition Assessment
Field Data Log**

**Segment 7
Line 1**

Client: City of Englewood, Colorado
 Project: South Englewood Storm Drain Condition Assessment
 Date: 11/11/2018

Material: CMP
 Diameter: 78 in.
 Station: Estimated 122+29 Station: Estimated 140+29
 Length: 1,808 ft.

Corrosion			
Location	Approx. Sta	Rating 1-3	Notes
Invert to Springline			No corrosion noted
Springline to Crown			No corrosion noted
Crown			No corrosion noted

Corrosion Rating Scale	
1	Major corrosion
2	Medium corrosion
3	Minor corrosion

Deformation			
Location	Approx. Sta	Rating 1-3	Notes
Invert to Springline			No deformation noted
Springline to Crown			No deformation noted

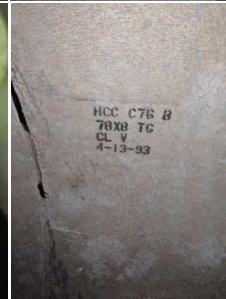
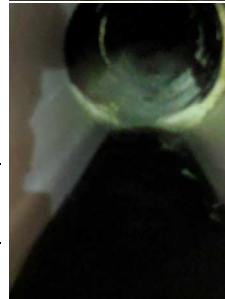
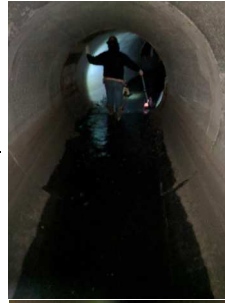
Deformation Rating Scale	
1	Major deformation
2	Medium deformation
3	Minor deformation

Invert Deterioration			
Location	Approx. Sta	Rating 1-3	Notes
Invert			No deterioration noted

Invert Rating Scale	
1	Major deterioration
2	Medium deterioration
3	Minor deterioration

Joints and Seams			
Location	Approx. Sta	Rating 1-4	Notes
Joints and Seams			No separation noted

Joints and Seams Rating Scale	
1	Separated (open) joint
2	Misaligned joint
3	Faulted joint
4	Partially opened



**Storm Drain Condition Assessment
Field Data Log**

**Segment 12
Line 2**

Client: City of Englewood, Colorado
 Project: South Englewood Storm Drain Condition Assessment
 Date: 11/11/2018

Material: CMP
 Diameter: 84 in.
 Station: 200+04 Station: 204+25
 Length: 421 ft.

Corrosion			
Location	Approx. Sta	Rating 1 - 3	Notes
Invert to Springline			No corrosion noted
Springline to Crown			No corrosion noted
Crown			No corrosion noted

Corrosion Rating Scale	
1	Major corrosion
2	Medium corrosion
3	Minor corrosion

Deformation			
Location	Approx. Sta	Rating 1 - 3	Notes
Invert to Springline			No deformation noted
Springline to Crown			No deformation noted

Deformation Rating Scale	
1	Major deformation
2	Medium deformation
3	Minor deformation

Invert Deterioration			
Location	Approx. Sta	Rating 1 - 3	Notes
Invert			No deterioration noted

Invert Rating Scale	
1	Major deterioration
2	Medium deterioration
3	Minor deterioration

Joints and Seams			
Location	Approx. Sta	Rating 1 - 4	Notes
Joints and Seams			No separation noted

Joints and Seams Rating Scale	
1	Separated (open) joint
2	Misaligned joint
3	Faulted joint
4	Partially opened



Storm Drain Condition Assessment
Field Data Log

Segment 13
Line 2

Client: City of Englewood, Colorado
Project: South Englewood Storm Drain Condition Assessment
Date: 11/11/2018

Material: CMP
Diameter: 84 in.
Station: 204+25
Length: 453 ft. Station: 208+78

Corrosion			
Location	Approx. Sta	Rating 1 - 3	Notes
Invert to Springline			No corrosion noted
Springline to Crown			No corrosion noted
Crown			No corrosion noted



Corrosion Rating Scale	
1	Major corrosion
2	Medium corrosion
3	Minor corrosion

Deformation			
Location	Approx. Sta	Rating 1 - 3	Notes
Invert to Springline			No deformation noted
Springline to Crown			No deformation noted

Deformation Rating Scale	
1	Major deformation
2	Medium deformation
3	Minor deformation

Invert Deterioration				
Location	Approx. Sta	Rating 1 - 3	Notes	
Invert				

Invert Rating Scale	
1	Major deterioration
2	Medium deterioration
3	Minor deterioration

Joints and Seams			
Location	Approx. Sta	Rating 1 - 4	Notes
Joints and Seams			No separation noted

Joints and Seams Rating Scale	
1	Separated (open) joint
2	Misaligned joint
3	Faulted joint
4	Partially opened

Storm Drain Condition Assessment
Field Data Log

Segment 14
Line 2

Client: City of Englewood, Colorado
Project: South Englewood Storm Drain Condition Assessment
Date: 11/11/2018

Material: CMP
Diameter: 84 in.
Station: 208+78
Length: 410 ft. Station: 212+88

Corrosion			
Location	Approx. Sta	Rating 1 - 3	Notes
Invert to Springline			No corrosion noted
Springline to Crown			No corrosion noted
Crown			No corrosion noted



Corrosion Rating Scale	
1	Major corrosion
2	Medium corrosion
3	Minor corrosion

Deformation			
Location	Approx. Sta	Rating 1 - 3	Notes
Invert to Springline			No deformation noted
Springline to Crown			No deformation noted

Deformation	
1	Major deformation
2	Medium deformation
3	Minor deformation

Invert Deterioration			
Location	Approx. Sta	Rating 1 - 3	Notes
Invert			No deterioration noted

Invert Rating Scale	
1	Major deterioration
2	Medium deterioration
3	Minor deterioration

Joints and Seams			
Location	Approx. Sta	Rating 1 - 4	Notes
Joints and Seams			No separation noted

Joints and Seams Rating Scale	
1	Separated (open) joint
2	Misaligned joint
3	Faulted joint
4	Partially opened

**Storm Drain Condition Assessment
Field Data Log**

**Segment 15
Line 2**

Client: City of Englewood, Colorado
 Project: South Englewood Storm Drain Condition Assessment
 Date: 11/11/2018

Material: RCP
 Diameter: 66 in.
 Station: 212+88 Station: 213+12
 Length: 24 ft.

Corrosion			
Location	Approx. Sta	Rating 1 - 3	Notes
Invert to Springline			No corrosion noted
Springline to Crown			No corrosion noted
Crown			No corrosion noted

Corrosion Rating Scale	
1	Major corrosion
2	Medium corrosion
3	Minor corrosion

Deformation			
Location	Approx. Sta	Rating 1 - 3	Notes
Invert to Springline			No deformation noted
Springline to Crown			No deformation noted

Deformation Rating Scale	
1	Major deformation
2	Medium deformation
3	Minor deformation

Invert Deterioration				
Location	Approx. Sta	Rating 1 - 3	Notes	
Invert				

Invert Rating Scale	
1	Major deterioration
2	Medium deterioration
3	Minor deterioration

Joints and Seams			
Location	Approx. Sta	Rating 1 - 4	Notes
Joints and Seams			No separation noted

Joints and Seams Rating Scale	
1	Separated (open) joint
2	Misaligned joint
3	Faulted joint
4	Partially opened



**Storm Drain Condition Assessment
Field Data Log**

**Segment 16
Line 2**

Client: City of Englewood, Colorado
 Project: South Englewood Storm Drain Condition Assessment
 Date: 11/11/2018

Material: CMP
 Diameter: 84 in.
 Station: 213+12
 Length: 146 ft. Station: 214+58

Corrosion			
Location	Approx. Sta	Rating 1 - 3	Notes
Invert to Springline			No corrosion noted
Springline to Crown			No corrosion noted
Crown			No corrosion noted

Corrosion Rating Scale	
1	Major corrosion
2	Medium corrosion
3	Minor corrosion

Deformation			
Location	Approx. Sta	Rating 1 - 3	Notes
Invert to Springline			No deformation noted
Springline to Crown			No deformation noted

Deformation Rating Scale	
1	Major deformation
2	Medium deformation
3	Minor deformation

Invert Deterioration			
Location	Approx. Sta	Rating 1 - 3	Notes
Invert			No deterioration noted

Invert Rating Scale	
1	Major deterioration
2	Medium deterioration
3	Minor deterioration

Joints and Seams			
Location	Approx. Sta	Rating 1 - 4	Notes
Joints and Seams			No separation noted

Joints and Seams Rating Scale	
1	Separated (open) joint
2	Misaligned joint
3	Faulted joint
4	Partially opened

**Storm Drain Condition Assessment
Field Data Log**

**Segment 17
Line 2**

Client: City of Englewood, Colorado
 Project: South Englewood Storm Drain Condition Assessment
 Date: 11/11/2018

Material: CMP
 Diameter: 84 in.
 Station: 214+58
 length: 512 ft. Station: 219+70

Corrosion			
Location	Approx. Sta	Rating 1 - 3	Notes
Invert to Springline			No corrosion noted
Springline to Crown			No corrosion noted
Crown			No corrosion noted

Corrosion Rating Scale	
1	Major corrosion
2	Medium corrosion
3	Minor corrosion

Deformation			
Location	Approx. Sta	Rating 1 - 3	Notes
Invert to Springline			No deformation noted
Springline to Crown			No deformation noted

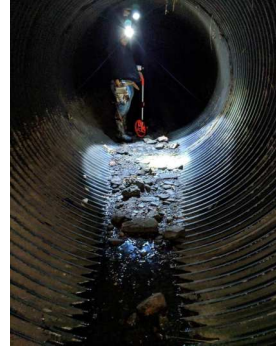
Deformation Rating Scale	
1	Major deformation
2	Medium deformation
3	Minor deformation

Invert Deterioration			
Location	Approx. Sta	Rating 1 - 3	Notes
Invert	215+14 to 217+67		No deterioration noted; debris from Sta 215+14 to Sta 217+67

Invert Rating Scale	
1	Major deterioration
2	Medium deterioration
3	Minor deterioration

Joints and Seams			
Location	Approx. Sta	Rating 1 - 4	Notes
Joints and Seams			No separation noted

Joints and Seams Rating Scale	
1	Separated (open) joint
2	Misaligned joint
3	Faulted joint
4	Partially opened



Storm Drain Condition Assessment
Field Data Log

Segment 18
Line 2

Client: City of Englewood, Colorado
Project: South Englewood Storm Drain Condition Assessment
Date: 11/11/2018

Material: CMP
Diameter: 76 in.
Station: 219+70
Length: 430 ft. Station: 224+00

Corrosion			
Location	Approx. Sta	Rating 1 - 3	Notes
Invert to Springline			No corrosion noted
Springline to Crown			No corrosion noted
Crown			No corrosion noted

Corrosion Rating Scale	
1	Major corrosion
2	Medium corrosion
3	Minor corrosion

Deformation			
Location	Approx. Sta	Rating 1 - 3	Notes
Invert to Springline			No deformation noted
Springline to Crown			No deformation noted

Deformation Rating Scale	
1	Major deformation
2	Medium deformation
3	Minor deformation

Invert Deterioration			
Location	Approx. Sta	Rating 1 - 3	Notes
Invert			No deterioration noted

Invert Rating Scale	
1	Major deterioration
2	Medium deterioration
3	Minor deterioration

Joints and Seams			
Location	Approx. Sta	Rating 1 - 4	Notes
Joints and Seams			No separation noted

Joints and Seams Rating Scale	
1	Separated (open) joint
2	Misaligned joint
3	Faulted joint
4	Partially opened

Storm Drain Condition Assessment
Field Data Log

Segment 19
Line 2

Client: City of Englewood, Colorado
Project: South Englewood Storm Drain Condition Assessment
Date: 11/11/2018

Material: CMP
Diameter: 76 in.
Station: 224+00
Length: 390 ft. Station: 227+90

Corrosion			
Location	Approx. Sta	Rating 1 - 3	Notes
Invert to Springline			No corrosion noted
Springline to Crown			No corrosion noted
Crown			No corrosion noted

Corrosion Rating Scale	
1	Major corrosion
2	Medium corrosion
3	Minor corrosion

Deformation			
Location	Approx. Sta	Rating 1 - 3	Notes
Invert to Springline			No deformation noted
Springline to Crown			No deformation noted

Deformation Rating Scale	
1	Major deformation
2	Medium deformation
3	Minor deformation

Invert Deterioration			
Location	Approx. Sta	Rating 1 - 3	Notes
Invert	226+29 to 226+43		No deterioration noted; Debris Sta 226+29 to Sta 226+43

Invert Rating Scale	
1	Major deterioration
2	Medium deterioration
3	Minor deterioration

Joints and Seams			
Location	Approx. Sta	Rating 1 - 4	Notes
Joints and Seams			No separation noted

Joints and Seams Rating Scale	
1	Separated (open) joint
2	Misaligned joint
3	Faulted joint
4	Partially opened

Storm Drain Condition Assessment
Field Data Log

Segment 20
Line 2
LAST SEGMENT INSPECTED

Client: City of Englewood, Colorado
Project: South Englewood Storm Drain Condition Assessment
Date: 11/11/2018

Material: CMP
Diameter: 60 in.
Station: 227+90
Length: 510 ft. Station: 233+00

Corrosion			
Location	Approx. Sta	Rating 1 - 3	Notes
Invert to Springline			No corrosion noted
Springline to Crown			No corrosion noted
Crown			No corrosion noted

Corrosion Rating Scale	
1	Major corrosion
2	Medium corrosion
3	Minor corrosion

Deformation			
Location	Approx. Sta	Rating 1 - 3	Notes
Invert to Springline			No deformation noted
Springline to Crown			No deformation noted

Deformation Rating Scale	
1	Major deformation
2	Medium deformation
3	Minor deformation

Invert Deterioration			
Location	Approx. Sta	Rating 1 - 3	Notes
Invert			No deterioration noted

Invert Rating Scale	
1	Major deterioration
2	Medium deterioration
3	Minor deterioration

Joints and Seams			
Location	Approx. Sta	Rating 1 - 4	Notes
Joints and Seams			No separation noted

Joints and Seams Rating Scale	
1	Separated (open) joint
2	Misaligned joint
3	Faulted joint
4	Partially opened

**Storm Drain Condition Assessment
Field Data Log**

Client: City of Englewood, Colorado
 Project: South Englewood Storm Drain Condition Assessment
 Date: 11/11/2018

Material: CMP
 Diameter: 60 in.
 Station: 233+00 Station: 237+05
 Length: 405 ft.

Corrosion			
Location	Approx. Sta	Rating 1 - 3	Notes
Invert to Springline			
Springline to Crown			
Crown			

Corrosion Rating Scale	
1	Major corrosion
2	Medium corrosion
3	Minor corrosion

Deformation					
Location	Approx. Sta	Rating 1 - 3	Notes		
Invert to Springline					
Springline to Crown					

Deformation Rating Scale	
1	Major deformation
2	Medium deformation
3	Minor deformation

Invert Deterioration					
Location	Approx. Sta	Rating 1 - 3	Notes		
Invert					

Invert Rating Scale	
1	Major deterioration
2	Medium deterioration
3	Minor deterioration

Joints and Seams					
Location	Approx. Sta	Rating 1 - 4	Notes		
Joints and Seams					

Joints and Seams Rating Scale	
1	Separated (open) joint
2	Misaligned joint
3	Faulted joint
4	Partially opened

**Storm Drain Condition Assessment
Field Data Log**

Client: City of Englewood, Colorado
 Project: South Englewood Storm Drain Condition Assessment
 Date: 11/11/2018

Material: CMP
 Diameter: 72 X 44 in.
 Station: 237+05 Station: 237+98
 Length: 93 ft.

Corrosion			
Location	Approx. Sta	Rating 1 - 3	Notes
Invert to Springline			
Springline to Crown			
Crown			

Corrosion Rating Scale	
1	Major corrosion
2	Medium corrosion
3	Minor corrosion

Deformation					
Location	Approx. Sta	Rating 1 - 3	Notes		
Invert to Springline					
Springline to Crown					

Deformation Rating Scale	
1	Major deformation
2	Medium deformation
3	Minor deformation

Invert Deterioration					
Location	Approx. Sta	Rating 1 - 3	Notes		
Invert					

Invert Rating Scale	
1	Major deterioration
2	Medium deterioration
3	Minor deterioration

Joints and Seams					
Location	Approx. Sta	Rating 1 - 4	Notes		
Joints and Seams					

Joints and Seams Rating Scale	
1	Separated (open) joint
2	Misaligned joint
3	Faulted joint
4	Partially opened