

Water Resources Division Manager

Senior Level



Calibre is looking for a passionate Water Resources Engineer to lead our WaterResources Division. This person can be at a senior engineer level or a division manager level with growth potential and on-the-job training. Our ideal candidate will be a great culture fit or culture add with an innovative mind for water resources engineering; a natural ability to lead a team; and a love for building relationships.

In this position, you'll be managing the water resources team on local public agency, federal, Mile High Flood District, and private development projects. The position requires a proficient understanding of storm drainage, stormwater master planning, H&H modeling, water transmission and distribution, water storage, and utility infrastructure.

You'll thrive in this position if you're passionate about:

- ✓ Taking care of waterways.
- ✓ Catapulting into leadership and growing with the company.
- ✓ Working with Mile High Flood District and local public agencies.
- ✓ Supporting US Forests, National Parks, and public open spaces.
- ✓ Conscientiously densifying urban areas.
- ✓ Defining your own vision and picking your clients.
- ✓ Responding to stormwater emergencies.
- ✓ Collaborating and building relationships.
- ✓ Loving where you work.

Required Skills

- ✓ At least 7 years of experience in water resources
- ✓ Fully proficient in AutoCAD Civil 3D
- ✓ Fully proficient in hydraulic and hydrologic modeling
- ✓ Professional Engineering (PE) certification

Calibre Perks

- ✓ Generous Salaries & PTO
- ✓ 100% Employer-Paid Health Insurance
- ✓ Diverse Project Workload
- ✓ Monthly Team-Building Events
- ✓ Birthdays your Way
- ✓ Snacks, Drinks & Weekly Catered Lunches
- ✓ 401K Contributions
- ✓ Tuition Reimbursement
- ✓ Flexible and Remote Work
- ✓ Transit Reimbursement
- ✓ Calibre Swag Store
- ✓ Health & Wellness Program
- ✓ Licensure Reimbursement
- ✓ Mentor Protégé Program
- ✓ Active Living Stipend
- ✓ Paid Weekly Training
- ✓ Paid Time Off to Vote
- ✓ Short-Term and Long-Term Disability
- ✓ Company-Paid FMLI Coverage

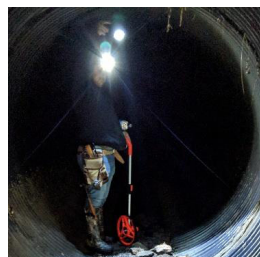
We work half-day Fridays!

Estimated Pay Scale

\$86,000 - \$116,000
dependent on experience

Ready to dive in?

Simply submit your resume and cover letter to info@calibre-engineering.com.



Courtesy City of Englewood

Courtesy Stream Landscape and Design

Courtesy Stream Landscape and Design